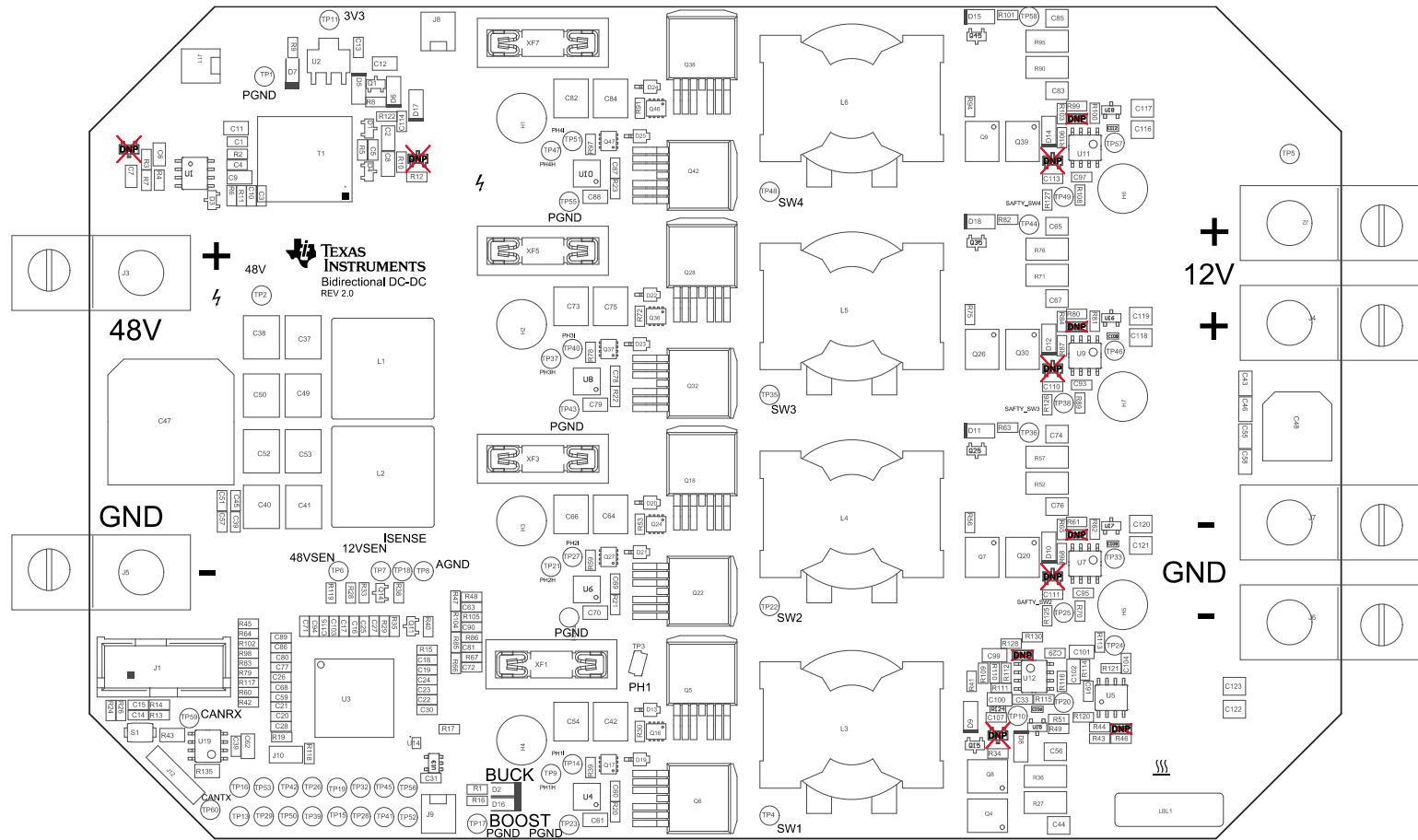


- Z24 ■ These assemblies must comply with workmanship standards IPC-A-610 Class 2, unless otherwise specified.
- Z23 ■ These assemblies must be clean and free from flux and all contaminants. Use of no clean flux is not acceptable.
- Z22 ■ These assemblies are ESD sensitive. ESD precautions shall be observed.
- Z21 ■ Initial lot(s) in replacement box after final wash. Test shall be 6 p in front. Test shall be per the Lot(s) Table in the PDF schematic.



Top Overlay

PCB VIEWED FROM TOP SIDE	BOM#:	TIDA-00653	REV:	E1	SUN REV:	Not In VersionControl
IGNORE ->						
PLOT NAME =	Top Assembly Drawing	GENERATED :	3/17/2016	4:05:29 PM	TEXAS INSTRUMENTS	



Bottom Overlay

PCB VIEWED FROM BOTTOM SIDE	BOARD #:TIDA-00653	REV:EI	SUN REV:Not In VersionControl
	IGNORE ->		
PLOT NAME =Bottom Assembly Drawing	GENERATED :3/17/2016	4:05:30 PM	TEXAS INSTRUMENTS